

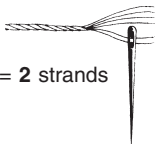
PERMIN

Scandinavian art needlework



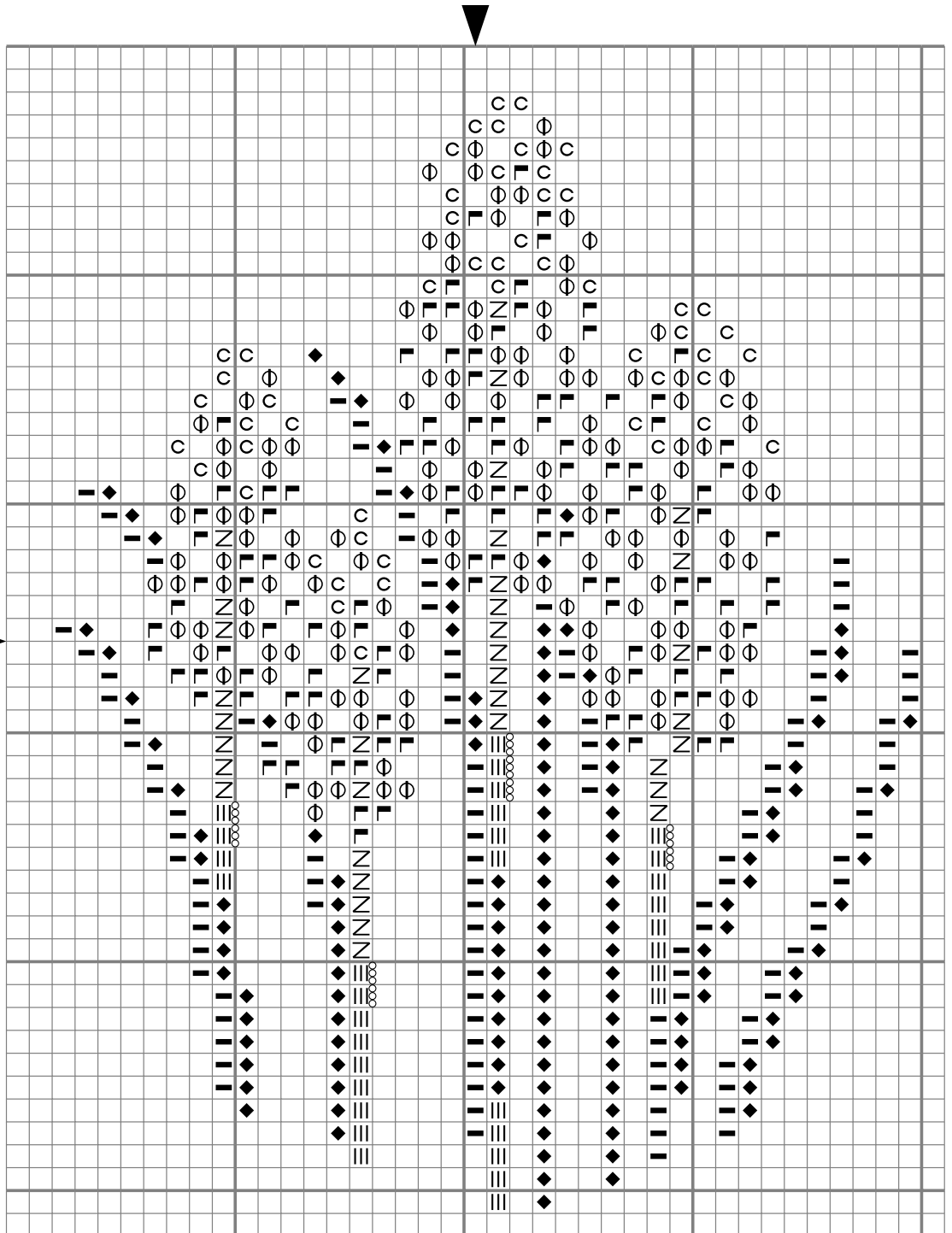
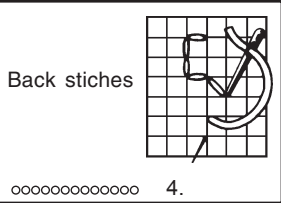
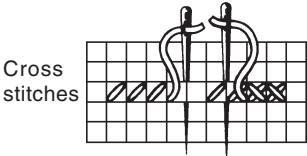
For this design please use
Permin aida fabric. Item no.
355 in colour 22 (355/22)

Work with split yarn = 2 strands



1 = 1 in the fabric
Count the design from centre of fabric

- 800. LIGHT BLUE
- 799. BLUE
- 798. DARK BLUE
- 3042. GREYISH LILAC
- 471. LIGHT GREEN
- 988. GREEN
- 986. DARK GREEN



Made in Denmark©